

INDIGO GROUP



COMPANY PROFILE

www.indigogroupbd.com

Table Of Contents

01. Company Overview	Page 03
02. Why Choose Us!	Page 04
03. Vision, Mission, Core Values	Page 05
04. Meet With Management	Page 06
05. Indigo Style Limited	Page 07
- Ready Made Garments	Page 07-11
- E-Commerce	Page 12-13
06. Fabric Art International	Page 14
- Fiber	Page 14-15
- Fabric	Page 16-19
07. Texwide Design Limited	Page 20
- Garments Accessories	Page 20-23
- Yarn	Page 24-25
- Dyes & Chemicals	Page 26-27
- Machineries & Spare Parts	Page 28-29
08. Our Valued Client	Page 30
09. Global Certifications	Page 31
10. Contact Us	Page 32

Company Overview

Founded in 2020, INDIGO GROUP aims to emerge as a frontrunner and pioneer in apparel design, sourcing, and manufacturing oversight. Guided by a team of seasoned industry experts, we are dedicated in enhancing our procedures and utilizing resources effectively to provide top-notch products promptly to our clients. INDIGO serves as the proficient liaison between customer expectations and manufacturing capabilities.



Explore our range – from finely crafted knit and woven all category products like shirts and T-shirts to versatile pants, outerwear and activewear. Timely deliveries are our hallmark, a testament to our dedication in meeting and surpassing your expectations.

Catering to discerning clients across Europe, USA, Canada, Brazil, Middle East, India, and beyond, INDIGO GROUP has earned a reputation as a trusted partner in the world of fashion. Our comprehensive solution encompasses various concerns, each specializing in different aspects of the RMG industry:

INDIGO STYLE LIMITED: Our esteemed buying house, INDIGO STYLE LIMITED, serves as a gateway to a world of fashion, catering to the diverse needs of our clientele with precision and flair.

FABRIC ART INTERNATIONAL: FABRIC ART INTERNATIONAL stands as a testament to our commitment to excellence in materials. Specializing in Fabric, and Textile fiber, this concern ensures that every thread used into our garments embodies the highest standards of quality and craftsmanship.

TEXWIDE DESIGN LIMITED: As the backbone of our trims, accessories, yarn, dyes & chemicals and machineries & spare parts segment, TEXWIDE DESIGN LIMITED ensures the seamless integration of essential elements, further enhancing the quality and appeal of our garments.

Why Choose Us!!

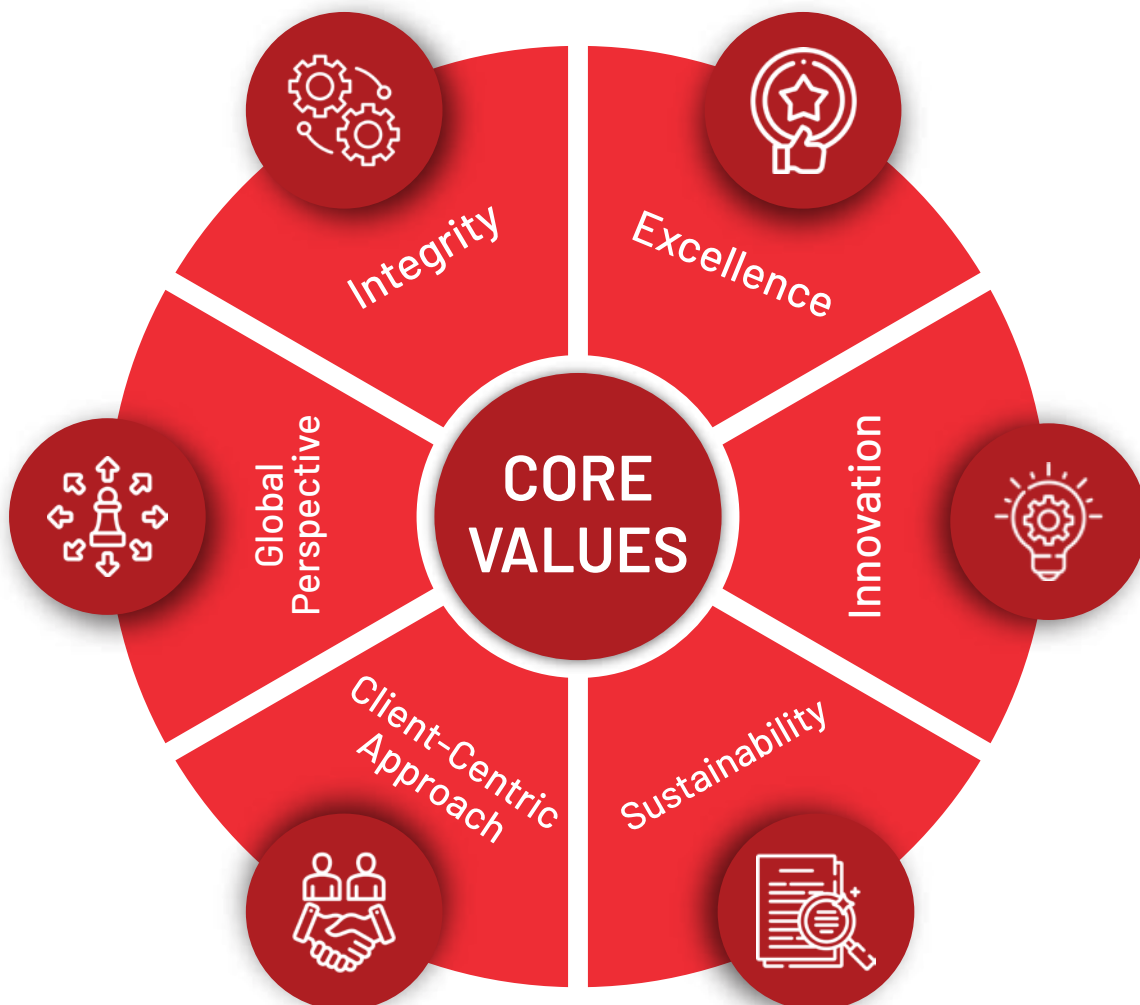
- **Quality and Reliability:** We always work for high-quality products. Choosing us means you can rely on consistent quality, which is crucial for customer satisfaction and brand reputation.
- **Innovation and Sustainability:** We care about the environment. We stay ahead with innovative practices and eco-friendly approaches, aligning our products with global standards.
- **Transparent Collaboration:** We prioritize integrity, transparency, and open communication in all partnerships.
- **Proven Reliability:** Our enduring partnerships with world-reputed brands speak to our consistent track record of reliability and exceeding expectations.
- **Less Wastage:** We are committed to minimizing waste in our manufacturing processes, ensuring efficient use of materials and resources, which contributes to sustainability and cost-effectiveness
- **Creative & Efficient:** With an innovation team and variety of in-house resources and environment. Dedicated to pushing the product to the next level and a tech team with industry experience finding solutions for a speedy delivery of the right product. Balance the creative and the commercial to the best result.



To become a reliable global apparel sourcing organization that provides excellence and quality through innovation with a forward-looking approach to achieve customer satisfaction in terms of quality and delivery.



Setting up ethical business standard by providing best service, quality and commitment as well as ensuring environment friendly sustainable growth through innovations, operational efficiencies and professionalism.



Meet With Management



Md Somidul Islam
Chairman

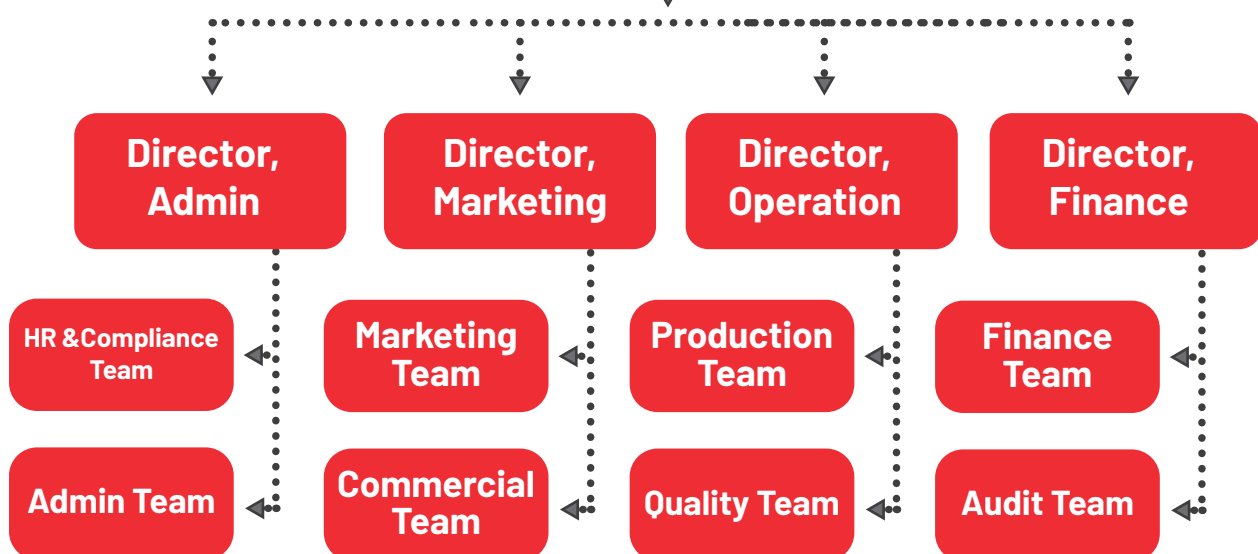


ATM Samsuzzman
Managing Director

Organogram

Chairman

Managing Director



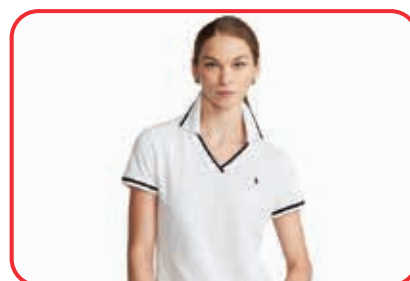
INDIGO STYLE LIMITED

Ready Made Garments Product

T-SHIRTS



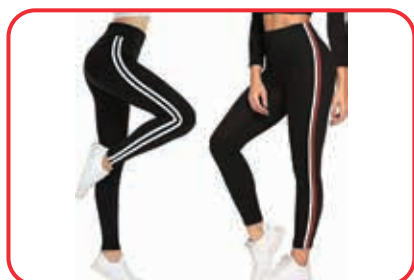
POLO SHIRT



PANTS & TROUSERS



LEGGINGS



DENIM WEAR



SHIRTS



SPORTS WEAR



WORK WEAR & SAFETY WEAR



JACKET & OUTERWEAR



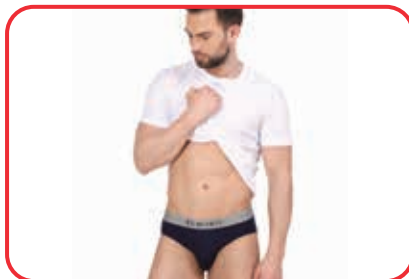
NIGHT WEAR



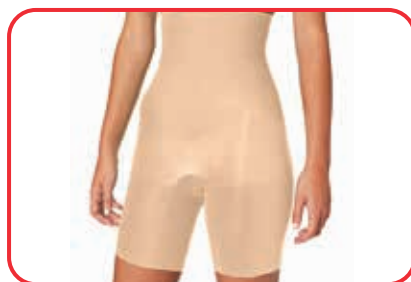
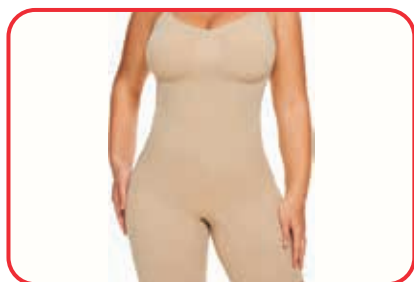
SWIM WEAR



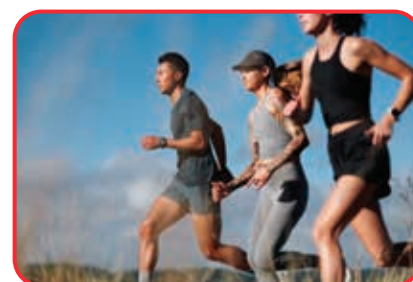
UNDER GARMENTS & INTIMATE WEAR



SHAPEWEAR



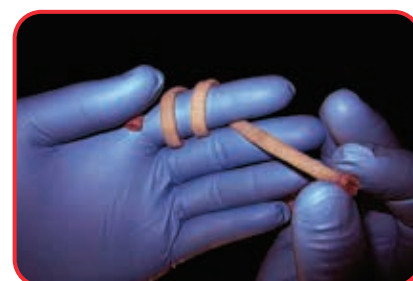
ACTIVE WEAR



HYGIENE PRODUCTS



MEDICAL APPLICATION



KIDS WEAR



Indigo Style E-Commerce

<https://indigostyle.com.bd>



As a key concern of Indigo Style Limited, Indigo E-Commerce is dedicated to providing top-quality products across all categories, catering to diverse customer needs. Our platform serves as a comprehensive online marketplace, offering a wide range of products to meet every customer's preferences and requirements.

Indigo E-Commerce ensures that every product we sell meets the high standards of quality and craftsmanship that Indigo Style Limited is known for. We are committed to delivering an exceptional shopping experience, characterized by secure payment options, reliable shipping, and excellent customer service. Our transparent communication and dedication to customer satisfaction ensure a positive and seamless interaction every time.

At Indigo E-Commerce, we prioritize innovation and sustainability, using eco-friendly materials and practices to align with global standards. By choosing Indigo E-Commerce, customers support a brand that values both superior quality and environmental responsibility.

Explore Indigo E-Commerce today and discover why we are a trusted name in the industry. As part of Indigo Style Limited, we bring excellence directly to your doorstep, meeting all your needs with style and reliability.



E-Commerce Product Categories

• WOMEN'S & GIRL'S FASHION	• AUTOMOTIVE & MOTORBIKE
• MEN'S & BOY'S FASHION	• TRADITIONAL WEAR
• HEALTH & BEAUTY	• MUSLIM WEAR
• WATCHES	• WESTERN WEAR
• BAGS	• INNER WEAR
• JEWELLERY	• SHOES
• ELECTRONIC DEVICES	• BABY TOYS
• TV & HOME APPLIANCES	• BOOKS & STATIONERY
• ELECTRONIC ACCESSORIES	• KITCHEN & DINING
• GROCERIES & PETS	• FURNITURE
• HOME & LIFESTYLE	• FITNESS EQUIPMENT
• SPORTS & OUTDOORS	• OUTDOOR GEAR

FABRIC ART INTERNATIONAL

FIBER

COTTON FIBER (CF)

- Egyptian Cotton
- Algodon Cotton
- Pima Cotton
- Batiste
- Upland Cotton
- Poly Cotton
- Supima Cotton
- Organic Cotton
- Bamboo Cotton
- Microfiber Cotton



- Slub Cotton
- Egyptian Giza Cotton
- Sea Cell Cotton
- Hemp Cotton Blend
- Linen Cotton Blend
- Tencel Cotton Blend
- Viscose Cotton Blend

FIBER

POLYESTER STAPLE FIBER (PSF)

1.2D x 32MM/ 38MM/ 44MM SD RW AA for Spinning

1.4D x 32MM/38MM/44MM/51MM SD RW AA for Spinning

2D/2.5D x 51MM/65MM/102MM SD RW AA for Spinning

Hollow Conjugated Non-silicon Fiber AA

Hollow Conjugated Silicon Fiber AA

1.4D(1.56dtex) x 38MM SD RW AA for Spinning - C1:
68 bales/25.84MT 40HQ



SPECIFICATIONS OF RECYCLED POLYESTER STAPLE FIBER (PSF)

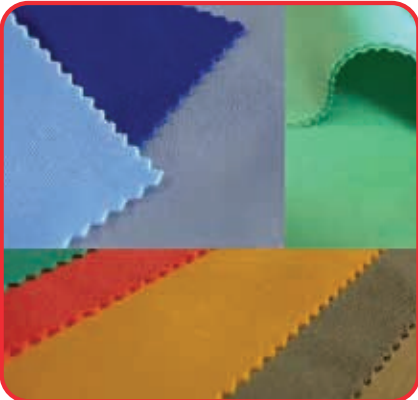
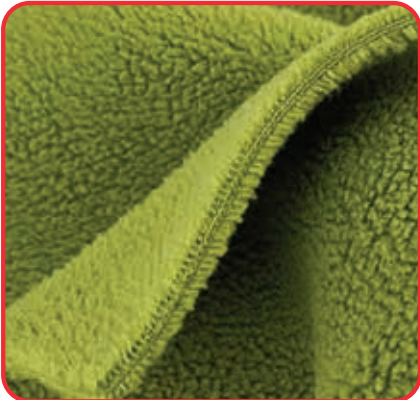
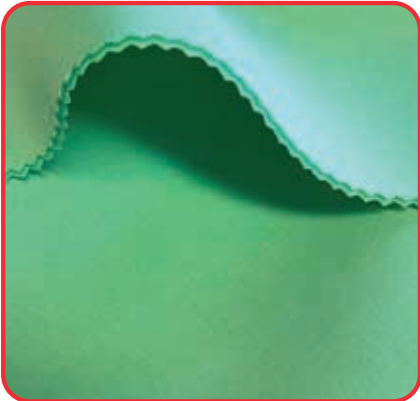
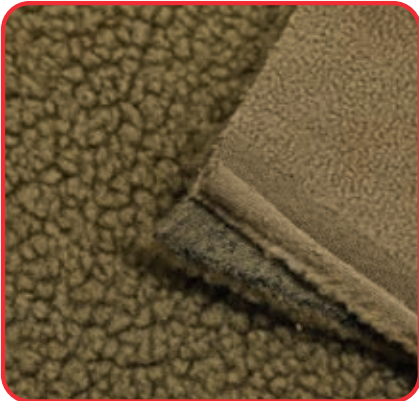
- Denier Size:- 1.5Den, 3Den, 6Den, 10Den, 15Den, 18Den, 22Den, 25Den, 40Den upto 50Den
- Cut length:- 44, 51, 64, 76, 102 (As per customer requirement)
- Feel:- siliconised or non siliconised soft as well as harsh feel
- Tensile strength:- 3.5 to 4.5 gm/Denier
- Elongation:- 40 to 60%
- Oil Pickup:- minimum 0.20% to 0.35%
- Crimps:- 3 to 5 per cm
- Shades:- All shades available
- Color Fastness:- 4+
- Quality:- Hollow Conjugate Siliconised Fiber, Hollow Non-Conjugate Siliconised Fiber, Solid Fiber Siliconised/non Siliconised

FABRIC

KNIT FABRIC

- | | |
|--|---|
| <ul style="list-style-type: none"> • Single Jersey • Rib • Interlock • Ponte Roma • Pique Interlock • Pique • Terry • Fleece (100% Cotton/CVC/PC/TC/Spun Poly) • Mesh • Polar Fleece/Micro Fleece (100% Polyester) • Coral Fleece • Morley Fleece • Sherpa Fabric • Bonded Sherpa • Waffle • Space Dyed • Flat Back Rib | <ul style="list-style-type: none"> • Pointelle Rib • Velour Ribbed • Velvet • Jacquard • Scuba • Tricot • Softshell • PU Coated • Velour Fleece • Warp Knitted • Purl Knit • Cable Knit • Handmade Knit • Crochet Knit • Crepe • All Types of YD, AOP and Space dyed • Verigated Rib |
|--|---|

KNIT FABRIC



FABRIC

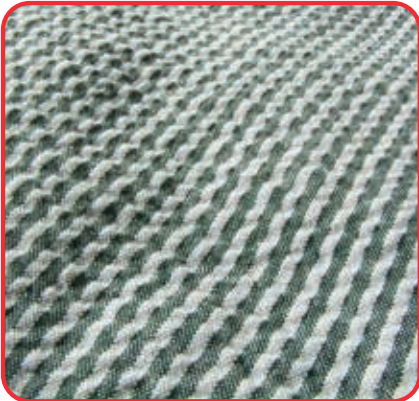
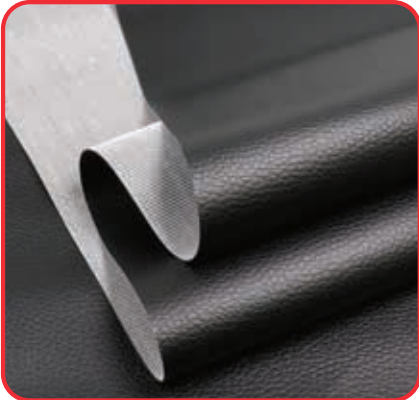
WOVEN FABRIC

- | | |
|--|--|
| <ul style="list-style-type: none"> • Denim Fabric • Twill Fabric • Canvas Fabric • Poplin Fabric • Polyester Taffeta • Nylon Taffeta • Micro Fiber Twill • Corduroy • Satin • Pongee • Taslon | <ul style="list-style-type: none"> • Crepe • Ribstop Twill • Chambery • Flannel • All kind of Outerwear Fabric • All kind of Activewear Fabric • Jacquard Fabric • Mesh Fabric • Fake Leather • Anti UV Woven Fabric • All Types of YD & Aop Fabric |
|--|--|

NON-WOVEN FABRIC

- | | |
|--|--|
| <ul style="list-style-type: none"> • Cotton batiste • Felt • Polypropylene spun-bonded fabric | <ul style="list-style-type: none"> • Polyethylene spun-bonded fabric • Acoustic spun-bonded fabric |
|--|--|

WOVEN FABRIC



Texwide Design Limited

GARMENTS ACCESSORIES

HANG TAG



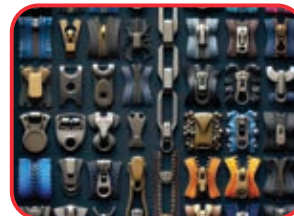
CARE LABEL



BUTTON



ZIPPER



HANGER



FELT



GROSGRAIN TAPE



HEAT TRANSFER LABEL



LEATHER PATCH



SATIN BOW



GARMENTS ACCESSORIES

SATIN RIBBON



SUSPENDER



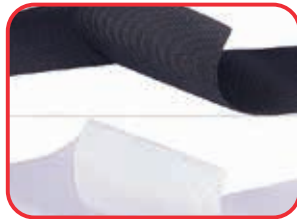
REFLECTIVE TAPE



VELCRO



ELASTIC



DRAWSTRING



RIB TAPE



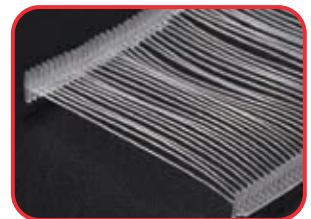
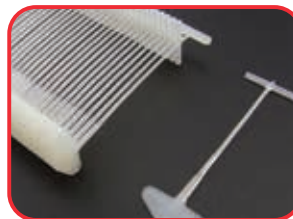
LEATHER BELT



LACE



TAG PIN

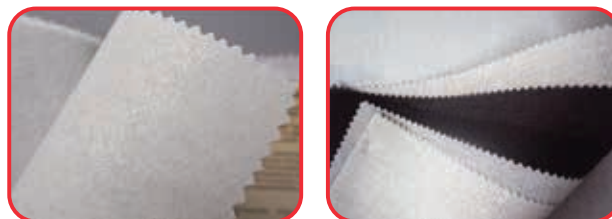


GARMENTS ACCESSORIES

FANCY ITEM



INTERLINING



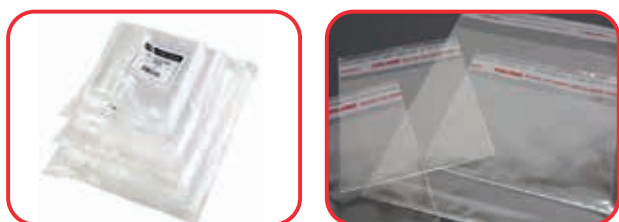
GUM TAPE



SELICONE TIPS



POLY BAG



CARTON



JACQUARD ELASTIC



WOVEN LABEL



PRICE TAG



WAIST TAG



Production Capacity

S.L	Item Description	Production Capacity
01	Satin/Cotton Fabric & Paper Ribbon Printed Labels	500,000 Pcs/Day (App).
02	Hangtag/Swing Ticket, Waste Tags, Barcodes/Barcode Adhesive, Photo Inlay & many others.	200,000 Pcs/ Day (App).
03	Button (Polyester, Chalk, Pearl, Rod/ Horn, Logo/ Engraved (Front, Side & Color), Wood button and Different Type of Special button.	100 GG / Per Day
04	Twill Tape (Waist Belt, Lurex Tape, Woven Elastic, Fancy Tape, Cotton Tape, Polyester Tape, Nylon Tape.)	50,000 Yds/ Per Day
05	Drawstring (Round/ Flat/ Tube Drawstring and Elastic Draw Cord.)	40,000 Yds/ Per Day
06	Elastic (Jacquard Elastic, Knit Elastic, Hole Elastic, Fancy Elastic)	80,000 Yds/ Per Day
07	Rib Tape (5MM to 11 CM), Polyester/ Cotton/Lurex/ Nylon and Any Design Rib Tape.	30,000 Yds/ Per Day
08	Poly Bag (PP & PE Poly bags of multi color prints.)	200,000 Pcs/ Per Day

In-House Machineries

S.L	Item Description	Item Unit	Quantity
01	1 No. 4 (4+2) color Flexo Label Printing Machine LX-6 from Focus Label Machinery 3 Nos. 4 color Rotary Label Printing Machine.	Printed Care Label	2 Pcs
			2 Pcs
02	KY Machine. CKY Machine SEO HA Lomm Machine	Twill Tape	6 Pcs 6 Pcs 6 Pcs
03	Full Auto (16/4) Full Auto (48/2) Full Auto (33/4) Full Auto (39/2) Full Auto (32/2) Full Auto (17/4) Full Auto (18/4) Full Auto (43/2)	Draw String	22 Pcs
04	TCH Elastic Machine DAHU Elastic Machine	Elastic	6 Pcs 6 Pcs
05	DAHU Rib Tape Machine	Rib Tape	3 Pcs
06	CKY Jacquard Elastic Machine KY Jacquard Elastic Machine	Jacquard Elastic	4 Pcs 4Pcs
07	Heidelberg Mac (48cmx65cm)(Germany)	Offset Printing	3 Pcs
08	Automatic Cutting machine Brand:-Puler 92C Country of Origin Germany	Puller Cutting	2 Pcs
09	Die Cutting Machine	Die Cutting	2 Pcs
10	Poly Bag Machine (PE & PP)	Poly Bag	2 Pcs

YARN

Yarn Composition	Yarn Count Range (Ne)
100% Cotton Yarn	6/1 - 45/1
100% Pima Cotton	6/1 - 45/1
100% Supima Cotton	6/1 - 45/1
100% Cotton Mélange Yarn	20/1 - 40/1
100% Cotton Yarn - OE (Combed/Carded)	5/1 - 16/1
100% Viscose/Rayon/Modal Yarn (Ecovera, Lenzing)	20/1 - 45/1
Cotton/Modal Blended Yarn	20/1 - 40/1
Cotton/Viscose Blended Yarn	20/1 - 40/1
Cotton/Viscose Blended Mélange Yarn	20/1 - 40/1
100% Polyester Ring Spun Yarn (Recycle/Vergin)	20/1 - 40/1
100% Polyester (Filament) Yarn	30D - 200D
100% Polyester Sewing Threads (Optical white/ Raw White- Derrons)	40/2, 50/2, 60/2
100% Linen	20/1 -
Cotton/Linen Blended Yarn	20/1 - 40/1
Polyester/Linen Blended Yarn	20/1 - 40/1
Polyester/Viscose Blended Yarn	20/1 - 40/1
Polyester/Viscose Blended Mélange Yarn	20/1 - 40/1
100% Lyocell/Tencel Yarn (Lenzing)	20/1 - 40/1
100% Nylon/Polyamide Yarn	20D, 30D, 40D, 70D, 105D, 140D
Spandex (Lycra)	20D, 30D, 40D, 70D, 105D, 140D
Siro Yarn (Polyester/Cotton)	20/1 - 40/1
100% Polyester Sewing Threads (SHT, SBR)	10 to 63
Core Spun Polyester with Spandex	75D/72F+44D, 150D/144F+70D

YARN

TWISTED YARN

Pioneer manufactures wide range of Dope Dyed/Melt Dyed polyester filament twisted/doubled yarns that cater to the wide applications and requirements for our clients. Twisted yarn can be made of either single or multiple plies.

DENIER RANGE

Twisted-75 - 2700
Doubled - 75/2-600/2
(cabled upto 20 plies

TPM RANGE

Twisted-60-500
Double-150 - 500

SHADES

AS PER REQUIREMENT
(Both Solids &Mélangé)

APPLICATIONS

Weaving Knitting | Threads & Floor covering items such as Shaggy Carpets
Embroidery Threads | Sewing Threads | Narrow Tapes & Belts etc.
HIGH BULK & CABLED YARN

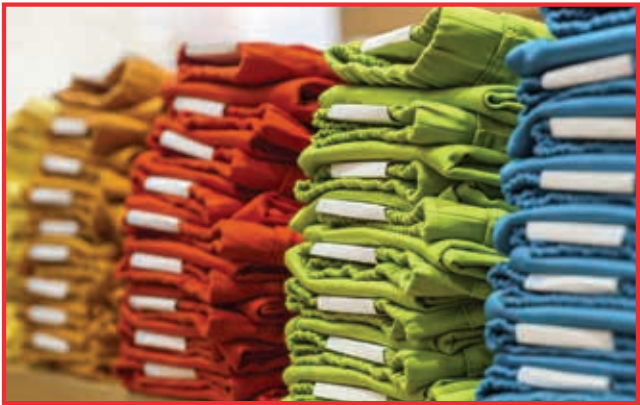


DYES & CHEMICALS

TYPE OF DYES	
<ul style="list-style-type: none"> • Reactive dyes • Sulphur dyes • Acid dyes • Vat dyes • Azo dyes • Direct dyes • Disperse dyes • Mordant dyes • Basic dyes 	<ul style="list-style-type: none"> • Natural dyes • Anthraquinone dyes • Cationic dyes • Fluorescent dyes • Pigments • Aniline dyes • Indigoid • Phthalocyanine dyes
TYPE OF REACTIVE DYES	
<ul style="list-style-type: none"> • Reactive yellow 3RS • Reactive black WNN • Reactive red 3BS • Reactive black DN • Reactive navy DS • Reactive Red LW • Reactive Yellow LW • Reactive Turquoise blue G • Reactive Blue R Sp 	<ul style="list-style-type: none"> • Reactive yellow 3RS • Reactive black WNN • Reactive red 3BS • Reactive black DN • Reactive navy DS • Reactive Red LW • Reactive Syno white 4BK • Reactive Yellow 4g

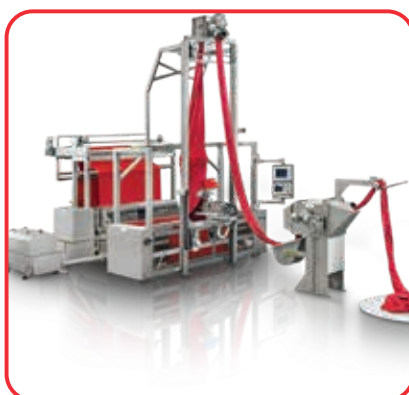
DYES & CHEMICALS

CHEMICALS	
<ul style="list-style-type: none"> • Enzyme • Acetic acid • Fixing agent • Sequestering agent • Silicon • Soda ash • Caustic soda • Detergent • Hydrogen peroxide • Salt • Bleaching powder • Sodium hyposulfit 	<ul style="list-style-type: none"> • Stabilizer • Whitening agent • Hygroscopic agent • Potassium permanganate • Sodium bicarbonate • Acid • Softener • Antifoaming agent • Optical brightener • Resin • Soaping agent • Knitting Oil
PRETREATMENT CHEMICAL	
<ul style="list-style-type: none"> • Alka detergent • Alka multifunctional chemical • Alka sequestering • Alka bio-enzyme 	<ul style="list-style-type: none"> • Alka soft cws • Alka silicon • Alka dyebath sequestering



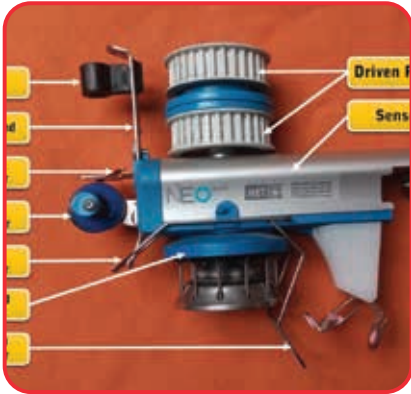
MACHINERIES & SPARE PARTS

MACHINERIES



MACHINERIES & SPARE PARTS

SPARE PARTS



WE ARE WORKING FOR

ZARA

INDITEX



MANGO



LI & FUNG

NEWYORKER

LPP

BESTSELLER

PRIMARK*

ADLER

okaïdi



TOMTAILOR

NEXT

MATALAN

KIABI
la mode à petits prix



SPRINGFIELD

TAKKU

NKD

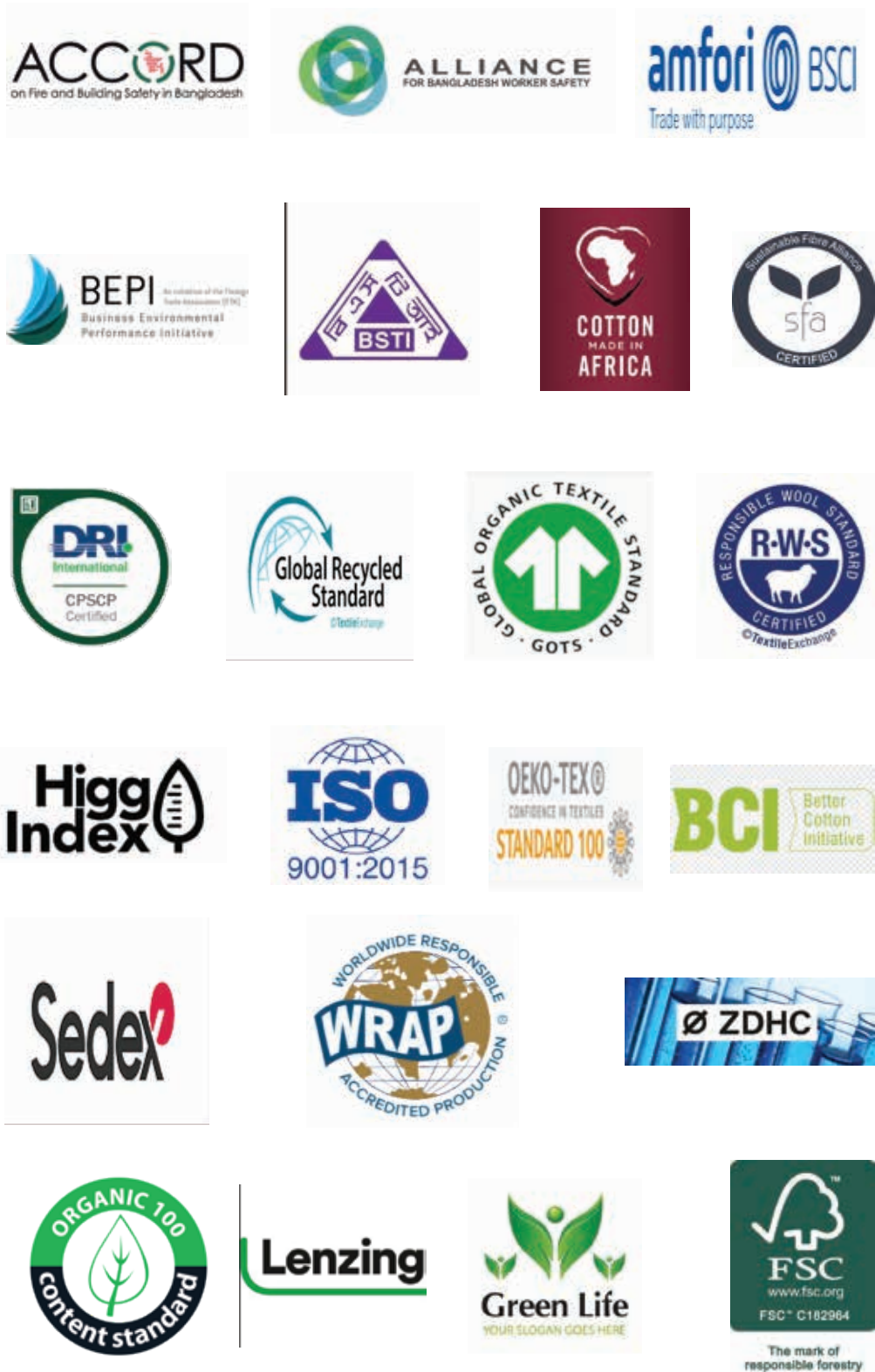
OTTO



STYLED BY
M & M BOUTIQUE



GLOBAL CERTIFICATIONS



CONTACT US

CORPORATE (INDIGO GROUP):

INDIGO STYLE LIMITED (BUYING HOUSE)

FABRIC ART INTERNATIONAL (FIBER/FABRIC)

House# 734/736, Road#10, Avenue#04,
DOHS Mirpur, Dhaka-1216

FACTORY:

TEXWIDE DESIGN LIMITED

(GARMENT ACCESSORIES)

House# 144/1, Alubdi, Mirpur
Cantonment, Dhaka-1216

CHINA OFFICE:

Tony Lyu

No.9-102, Boutique Commercial District,
Shengze Town, Wujiang District, Suzhou
City, Jiangsu Province, P.R. China

Tel: +86 13906310422

Email: 13906310422@163.com

HONG KONG OFFICE:

11/F, Flat-1, Hong kiu Mansion,

313 Nathan Road, Jordan, Hong kong

Tel: 852-2384 4986, Fax: 852-238 6832,

Mobile: 852-90373732

E-mail: sayed@netvigator.com

CHAIRMAN:

Md. Somidul Islam

Tel: +8801711204246

Wechat: Somidultex

Email: somidul@indigogroupbd.com,
info@indigogroupbd.com

MANAGING DIRECTOR:

ATM Samsuzzman

Tel: +8801718018537

Wechat: zaman_fabricart01

Email: zaman@indigogroupbd.com,
info@indigogroupbd.com

DIRECTOR:

Md Saiyadur Rahman

Tel: +8801678858182 Wechat: wxid_icrkbggy0fvqf22

Email: sayed@indigogroupbd.com, info@indigogroupbd.com